

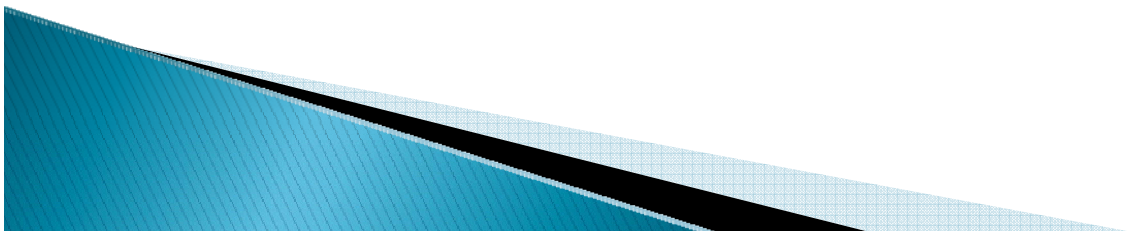
# Project Integration Management

January 21, 2009

Terri Keeling

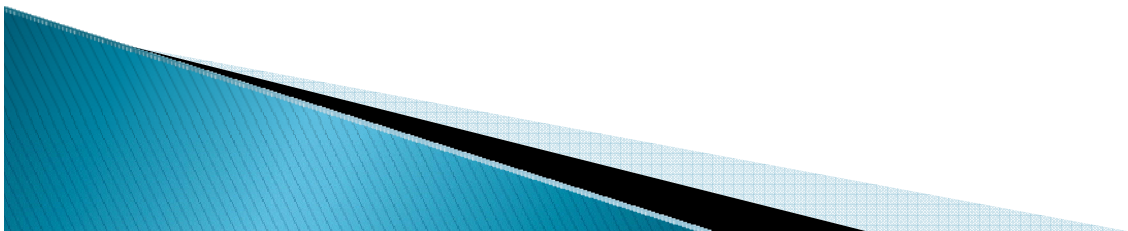


Project Integration Management is a group of processes required to ensure that the various elements of the project are properly coordinated.

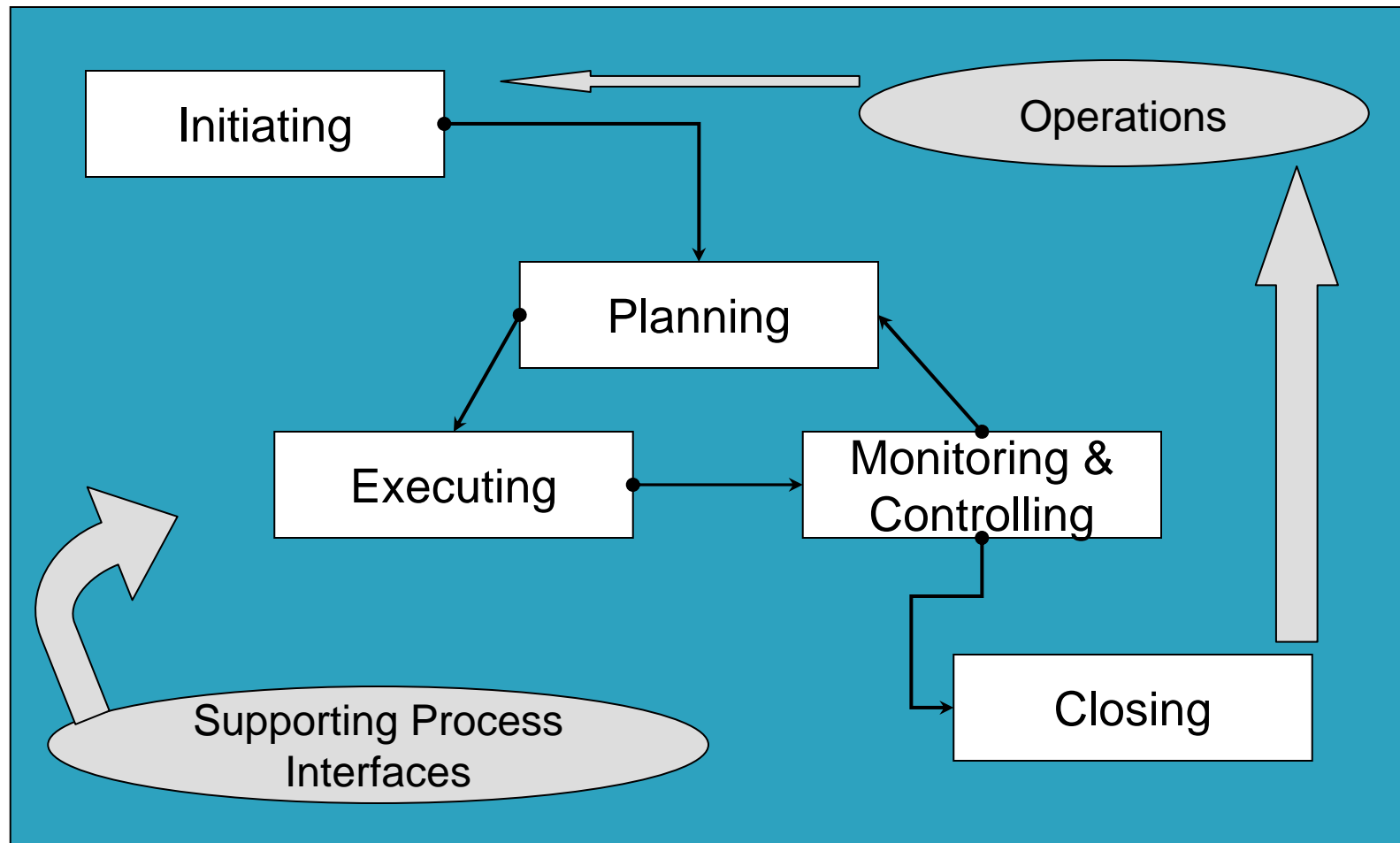


# Integrative PM Processes:

- ▶ Develop Project Charter
- ▶ Develop Preliminary Project Scope Statement
- ▶ Develop Project Management Plan
- ▶ Direct and Manage Project Execution
- ▶ Monitor and Control Project Work
- ▶ Integrated Change Control
- ▶ Close Project



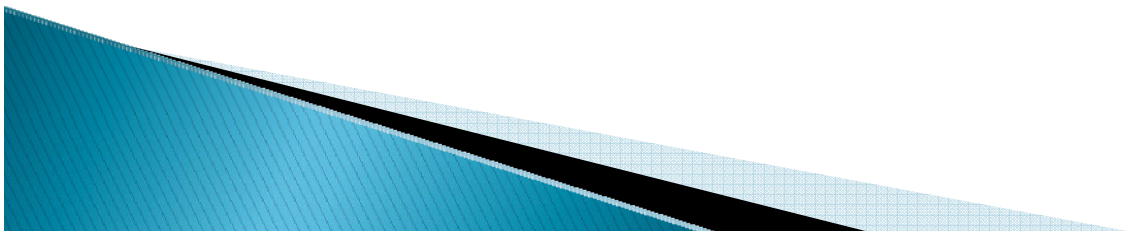
# Process Groups:



Process Groups					
	Initiating	Planning	Executing	Monitoring & Controlling	Closing
Integration	Develop Project Charter	Develop Project Management Plan	Direct and Manage Project Execution	Monitor & Control Project Work	Close Project
	Develop Preliminary Project Scope Statement			Integrated Change Control	
Scope		Scope Planning		Scope Verification	
		Scope Definition		Scope Control	
		Create WBS			
Time		Activity Definition		Schedule Control	
		Activity Sequencing			
		Activity Resource Estimating			
		Schedule Development			
Cost		Cost Estimating		Cost Control	
		Cost Budgeting			
Quality		Quality Planning	Perform Quality Assurance	Perform Quality Control	
Human Resources		Human Resource Planning	Acquire Project Team	Manage Project Team	
			Develop Project Team		
Communications		Communication Planning	Information Distribution	Performance Reporting	
				Manage Stakeholders	
Risk		Risk Management Planning		Risk Monitoring and Controlling	
		Risk Identification			
		Qualitative Risk Analysis			
		Quantitative Risk Analysis			
		Risk Response Planning			
Procurement		Plan Purchases and Acquisitions	Request Seller Responses	Contract Administration	Contract Closure
		Plan Contracting	Select Sellers		

# Project Integration & Risk:

- ▶ Knowledge Areas
  - Are all interrelated and must be managed collectively.
- ▶ Risk Management
  - Must be applied to all knowledge areas.







# Failure to Integrate:

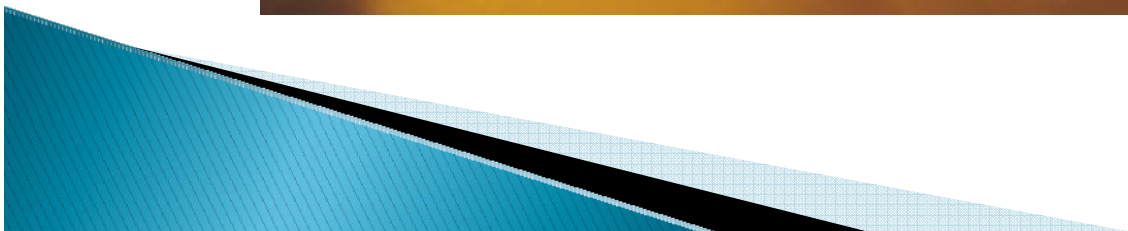
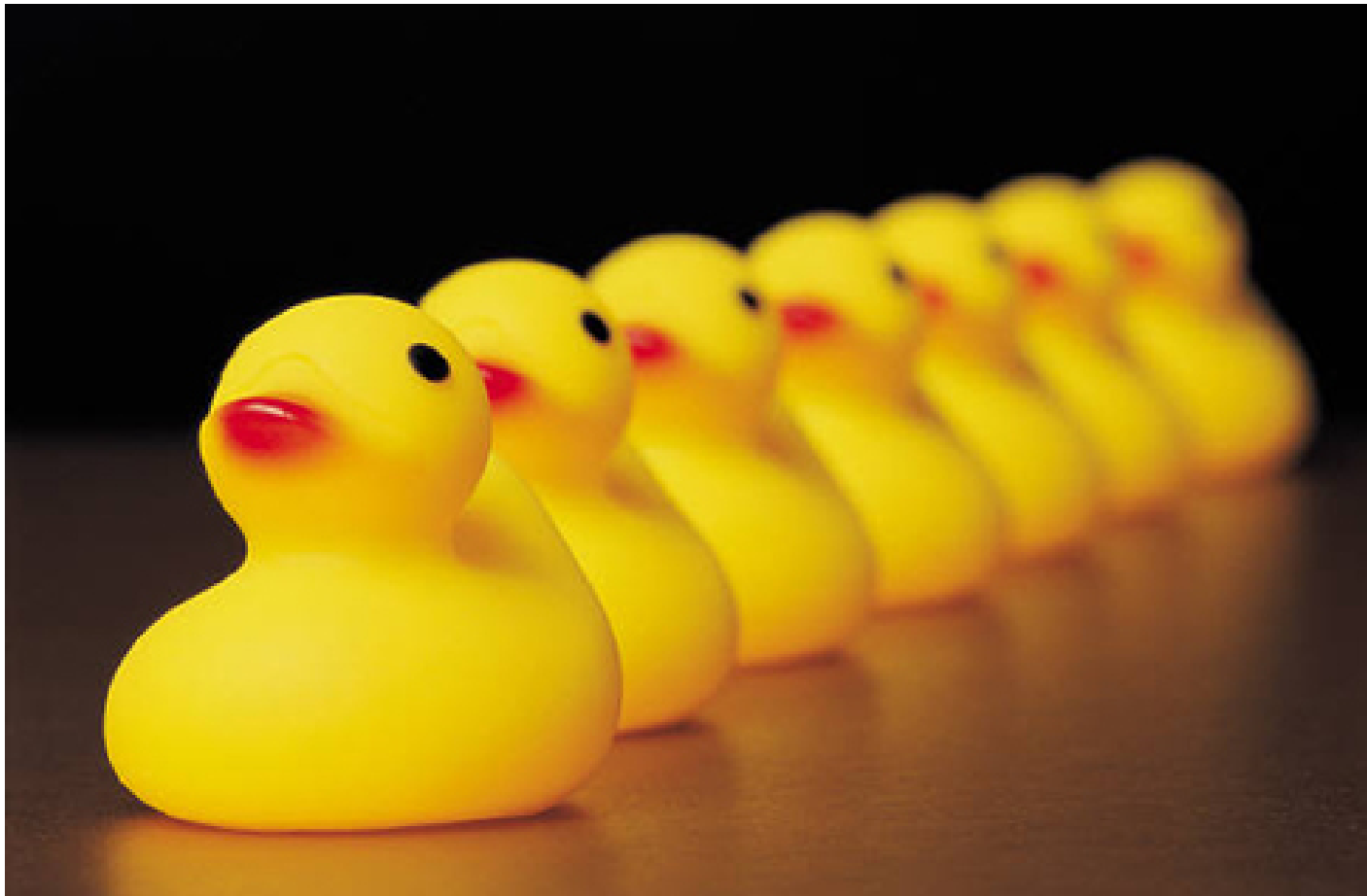
Failure to  
integrate  
planning  
processes  
with  
execution  
processes  
...





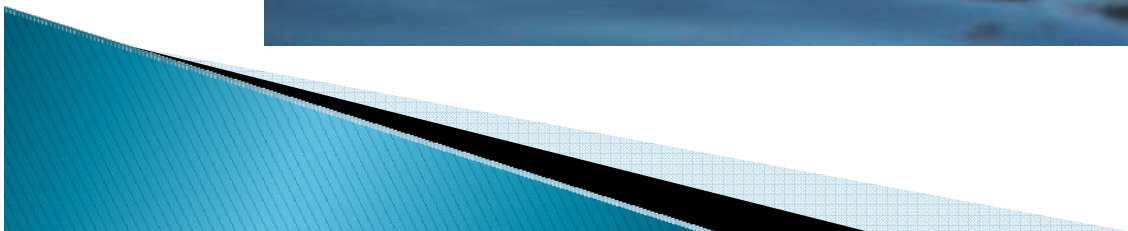


Think you have all your ducks in a row?





Have you fully integrated your processes?



# Project Integration:

- ▶ Don't ignore risk.
- ▶ Know how integration allows for management of risk.
- ▶ Be aware of each piece of the puzzle.

