



Time Management

A Small Business Perspective

Herb Pollard III
Project Manager
for

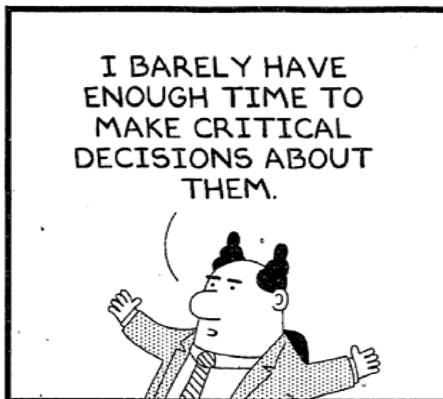


Introduction:

DILBERT



www.dilbert.com scottadams@aol.com



2-8-05 © 2005 Scott Adams, Inc./Dist. by UFS, Inc.



Project Phases and the Areas of Knowledge (KNOW this diagram + inputs/tools/outputs – page 70 in PMBOK)

	Project Phases				
Areas of Knowledge	Initiation	Planning	Execution	Control	Closure
Project Mgmt Integration	Develop Project Charter Develop Prelim Project Scope Statement	Develop Project Mgmt Plan	Direct and Manage Project Execution	Monitor and Control Project Work Integrated Change Control	Close Project
Project Scope Mgmt		Scope Planning Scope Definition Create WBS		Scope Verification Scope Control	
Project Time Mgmt		Activity Definition Activity Sequencing Activity Resource Estimating Activity Duration Estimating Schedule Development		Schedule Control	
Project Cost Mgmt		Cost Estimating Cost Budgeting		Cost Control	
Project Quality mgmt		Quality Planning	Perform Quality Assurance	Perform Quality Control	
Project Human Resource Mgmt		Human Resource Planning	Acquire Project Team Develop Project Team	Manage Project Team	
Project Communications mgmt		Communications Planning	Information Distribution	Performance Reporting Manage Stakeholders	
Project Risk Mgmt		Risk Management Planning Risk Identification Qualitative risk Analysis Quantitative Risk Analysis Risk Response Planning		Risk Monitoring and Control	
Project Procurement Mgmt		Plan Purchases and Requisitions Plan Contracting	Request Seller Responses Select Sellers	Contract Administration	Contract Closeout



6.1 Activity Definition

Inputs

Internal and environmental factors (PMBOKism is enterprise environmental factors and organizational process assets)

Project scope statement

Work breakdown structure (WBS)

WBS dictionary

Project management plan

Tools and Techniques

Decomposition

Templates

Rolling wave planning

Expert judgment

Planning component

Outputs

Activity list

Activity attributes

Milestone list

Requested changes



6.2 Activity Sequencing

Inputs

- Project scope statement
- Activity list
- Activity attributes
- Milestone list
- Approved change requests

Tools and Techniques

- Precedence diagramming method (PDM)
- Arrow diagramming method (ADM)
- Schedule network templates
- Dependency determination
- Applying leads and lags

Outputs

- Project schedule network diagrams
- Activity list (updates)
- Activity attributes (updates)
- Requested changes



6.3 Activity Resource Estimating

Inputs

- Internal and environmental factors
- Activity list
- Activity attributes
- Resource availability
- Project management plan

Tools and Techniques

- Expert judgment
- Alternatives analysis
- Published estimating data
- Project management software
- Bottom-up estimating

Outputs

- Activity resource requirements
- Activity attributes (updates)
- Resource breakdown structure
- Resource calendars (updates)
- Requested changes



6.4 Activity Duration Estimating

Inputs

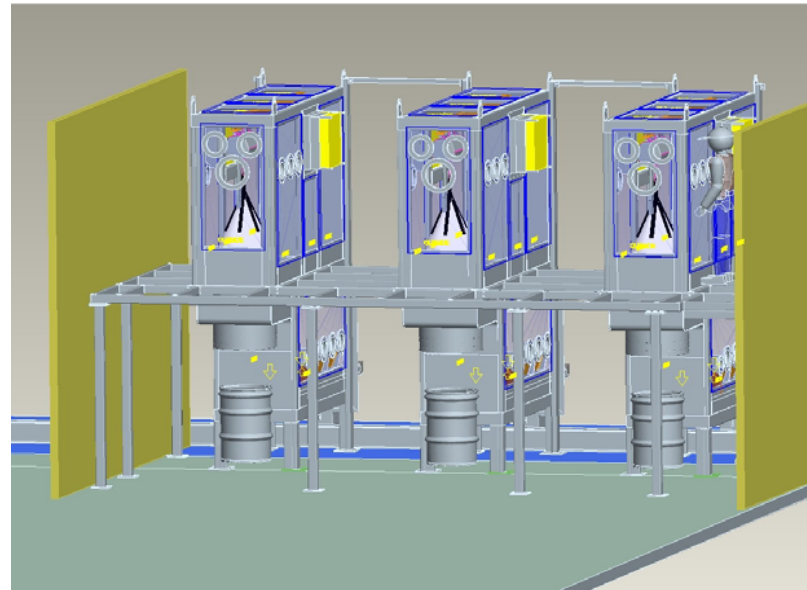
- Internal and environmental factors
- Project scope statement
- Activity list
- Activity attributes
- Activity resource requirements
- Resource calendar
- Project management plan
 - Risk register
 - Activity cost estimate

Tools and Techniques

- Expert judgment
- Analogous estimating
- Parametric estimating
- Three point estimates
- Reserve analysis

Outputs

- Activity duration estimates
- Activity attributes (updates)



6.5 Schedule Development

Inputs

Internal and environmental factors

Activity list

Activity attributes

Project schedule network diagrams

Activity resource requirements

Resource calendars

Activity duration estimates

Project management plan

-Risk register

Outputs

Project Schedule

Schedule model data

Schedule baseline

Resource requirements (updates)

Activity attributes (updates)

Project calendar (updates)

Requested Changes

Project management plan (updates)

-Schedule management plan (updates)

Tools and Techniques

Schedule network analysis

Critical path method

Schedule compression

What-if scenario analysis

Resource leveling

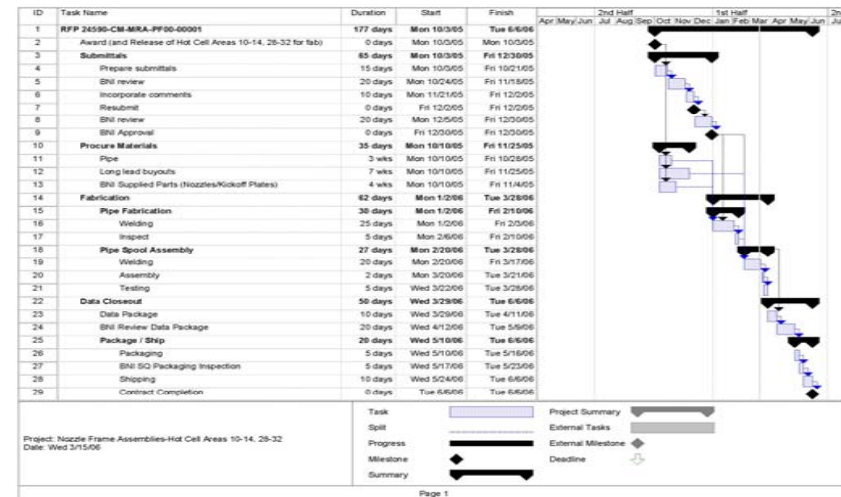
Critical chain method

Project management software

Applying calendars

Adjusting leads and lags

Schedule model



6.6 Schedule Control

Inputs

Schedule management plan

Schedule baseline

Performance reports

Approved change requests

Tools and Techniques

Progress reporting

Schedule change control system

Performance measurement

Project management software

Variance analysis

Schedule comparison bar charts

Outputs

Schedule model data (updates)

Schedule baseline (updates)

Performance measurements

Requested changes

Recommended corrective actions

Activity list (updates)

Activity attributes (update)

Project management plan (updates)



You are invited to an
OPEN HOUSE
 AT



Date: 3/28/06

Time: 4:00pm to 8:00pm

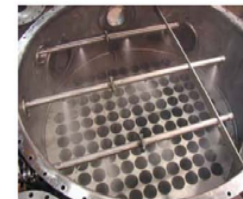
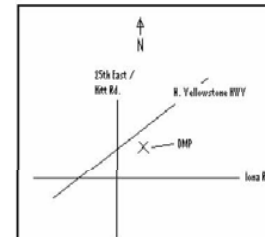
Diversified Metal Products invites you to tour our three shops and meet our staff. We have a broad range of projects in process. We would like the opportunity to show you some of our capabilities. This is also a chance to meet our new staff members.

Highlights

- ♦ Shop Tours
- ♦ See our Waterjet Cutter in action!
- ♦ Snacks and Beverages
- ♦ See what DMP can do for you

Please RSVP to Nathan:
nathanm@diversifiedmetal.com
 or 529-9655

Located at 3710 North Yellowstone Hwy.
 on the corner of Hitt Rd. and N. Yellowstone



From Concept to Completion

3710 N. Yellowstone Hwy
 Idaho Falls, Idaho 83401
 Phone: 208-529-9655
 Fax: 208-529-9836

